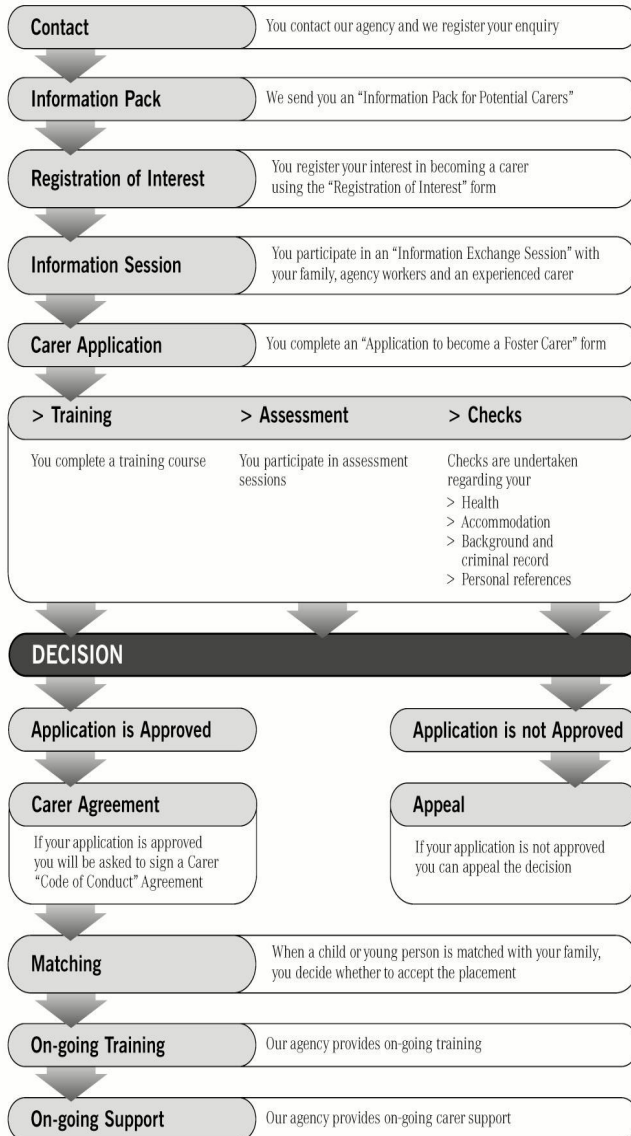


How do I become a Pathways Foster Carer?



Enquiries

Please direct enquiries to:

Lisa Harvey

m: 0458 224 810

e: icacoordinator@pathfinders-aus.org

f: 02 6721 3528

a: 3 Glen Innes Road, Inverell NSW 2360



www.pathfinders-aus.org



Foster Care



Who are we?

Pathfinders Ltd is a not-for-profit company limited by guarantee operating across the New England and Northwest Tablelands and Mid North Coast of New South Wales. Pathfinders operate a number of programs and services based in promoting youth and family welfare.

These programs include Youth Refuge, Residential Out of Home Care, Supported Independent Living, Family Support Service, Youth Accommodation Services, Family Referral Service and Non Placement Support Services.

Pathfinders program, Pathways have an established Out of Home Care program in Armidale and Inverell, group homes, intensive and generalist foster care.

We are currently seeking people interested in becoming foster carers in the Armidale, Inverell and Glen Innes areas.

Pathfinders Vision

Thriving communities, in which all fully participate and develop freely through mutual trust and acceptance.

Pathfinders Mission

To empower people to live with hope and equal opportunity to achieve their potential.

What is foster care ?

Why are children placed in Foster care?

Children are placed in foster care when their families are not able to care for them. This could be because of abuse, neglect, drug and alcohol problems, physical or mental illness, domestic violence, family breakdown or any other reason that means a parent is not able to care for their child.

Who can be a foster carer?

Many different types of people make good foster carers. We need carers from a range of backgrounds in order to meet the needs of children requiring care. Foster carers must be at least 21 years old and can be single women or men, cohabiting, married or same-sex couples, with or without children, young or old.

Can I be a foster carer if my children still live at home?

Yes. It can depend on the age of your children and the needs of the child you foster. Children who need care may have complex needs and require a great deal of time and attention. Fostering a child is a big change, so it is important to talk to our casework about your particular situation.

Can I be a foster carer if I work?

Yes. It can depend on the needs of the foster child and the type of care you are providing. A carer with school aged children and adolescents can work full time, pre-school and younger children may need someone at home.

What types of foster care are there?

Temporary Care

Sometimes children come into temporary care due to parental illness, crisis or family break down. The goal is often to restore these children to their families over a period of time

Permanent Care

Children in permanent care have been placed in care by the Court usually to age 18, these children/young people, require stable long term placements to help them reach their full potential.

Intensive Support Care

Some children/young people who come into care require a high level of support due to a range of issues. These children can be challenging and require dedicated carers who have no young children of their own.

Respite Care

Caring for children can be challenging. Respite care allows full time carers to have a break. This is a good way to experience fostering if you are not ready for a full time commitment.