

# Welcome to Ashford's Bunbun Playgroup

Bunbun Playgroup is a supported playgroup program, for Aboriginal and non-Aboriginal families residing in the Ashford area. Funded by Families NSW.

All cultures, religions and beliefs are welcomed.

## What do we do at Playgroup?

At playgroup, we provide a safe place for you and your child to play, learn and socialise with other families, and participate in a variety of activities. Parents can catch up with each other and spend time with their children.

## Visitors and Guest Speakers

Special guests are regularly invited to attend to provide education to families covering a range of topics from Transitioning to school, Parenting, Early intervention, Child safety, Health, and Healthy living.

## Contact Us

Bunbun Playgroup is run by the staff of Inverell Family Youth Support Service.

Phone: (02) 6720 8850

Mobile: 0407 910 226

Email: [ifyss@pathfinders.ngo](mailto:ifyss@pathfinders.ngo)

Facebook:

[www.facebook.com/ashfordplaygroup](https://www.facebook.com/ashfordplaygroup)



IFYSS acknowledges the Traditional Owners of the land on which we work and pay respect to Elders past, present and emerging



IFYSS  
Inverell Family Youth  
Support Service



## Ashford's Supported Playgroup - Bunbun



Weekly supported playgroup for  
children 0-6 years and their Parents/ Carers.



IFYSS  
Inverell Family Youth  
Support Service



# Come along and join our Bunbun playgroup

## What to bring?

Please pack a hat and dress your children in play clothes as they will most likely get a little messy during activities. When attending playgroup you will need to bring your own nappies, bottles, special dietary foods or medicines your child requires, as these items are not supplied by the playgroup.

## What if my child is sick?

It's best for your child to stay at home until they feel better to prevent the sickness from spreading.

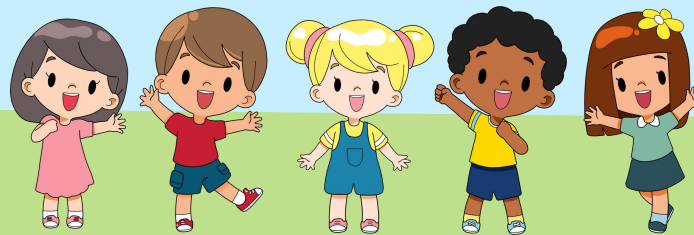


## What do parents do at Playgroup?

Your child must be supervised by a parent, grandparent, adult family member or carer during playgroup.

You are responsible for their supervision and behaviour management. Parents/ Carers are encouraged to positively interact with your child and interact positively with other children and families. IFYSS Support Workers are available to provide Family support during the Playgroup and ongoing support outside of the weekly

Bunbun sessions.



## Where:

Ashford Preschool  
53 Martyn Street, Ashford NSW 2361

**When:** Each Friday  
(During the school term)

**Time:** 10:00am - 12:00pm

**Cost:** Playgroup & Morning Tea are **FREE**

**Attendees:** Children aged 0-6 years & parents or carers

## About Pathfinders.

### OUR VISION

Pathfinders provides community care support services to regional, rural, and remote communities. We empower, encourage and connect communities and families with culture, supporting them to thrive and participate to live freely through mutual trust and acceptance.

### OUR MISSION

Pathfinders recognises the uniqueness of the culture and country in which we work.

We strive to:

Support and resource a workforce who empower people to live with hope and equal opportunity, and  
Meet the diverse needs of our programs and strive to surpass expectations